



CELL DISRUPTOR GENIE™



Affordable Bead Beater for Cell Disruption and Pellet Re-suspension in Microtubes

A powerful mechanical cell disruption device ideal for challenging glass bead procedures, including the disruption of yeast cells, bacteria, tissue or any sample requiring violent high-speed agitation. Digital variable speed model and Fixed speed model available - both support timed or continuous operation. Supports high-throughput disruption of up to 12 microtubes, 1.5 mL or 2.0 mL, snap cap or screw cap.

Unique Features:

- **Patented Dual-motion Mixing**

A unique patented mechanism combines vortex and disruption, enabling sample-bead collisions or breaking of pelletized samples directly within the tube.

- **Use with Disruptor Beads™**

Made from spherical lead-free soda lime glass, the Disruptor Beads™ are available in two sizes: 0.1 mm beads, ideal for bacteria samples, and 0.5 mm beads, perfect for yeast or fungi samples.

- **More than Disruption**

Simply remove the microtube holder and snap on the pop-off cup to enable continuous or timed high-speed vortexing of single test tubes.

CELL DISRUPTOR GENIE™

Specifications

Model	Disruptor Genie	Digital Disruptor Genie
Control	Analog	Digital
Display	-	Red LED
Accessories Included	Universal Microtube Holder, Pop-off Cup	
Capacity	12x 1.5/2.0 mL microtubes	
Speed Range	3000 rpm 2850 rpm (for 50Hz models)	1000 rpm - 3000 rpm 1000 rpm - 2850 rpm (for 50Hz models)
Speed Alarms	-	On/Off, Adjustable
Timer	0-15 minutes	1-99 minutes
Safety Certification	CE; ETL	
Power	120V, 0.65A, 60Hz 230V, 0.5A, 50Hz 100V, 1.0A, 50Hz	120V, 0.65A, 60Hz 230V, 0.5A, 50Hz 100V, 1.0A, 50/60Hz
Dimensions (L x W x H)	165 x 122 x 190 mm	
Net Weight	4.3 kg	
Working Environment	0°C - 38°C, 95%RH, non-condensing	

Accessories



83041243 (REF #: SI-V209)

**Vertical High Speed
Microtube Holder**



83041423 (REF #: OK-0500-902)

**3" Platform Head With Rubber
Cover Kit**



83041438 (REF #: 146-3011-00)

Pop-Off Cup Head



83041441 (REF #: OK-0236-408)

**Molded Bottom Closure And
Screws Kit, Re**



83041475 (REF #: OK-0500-901)

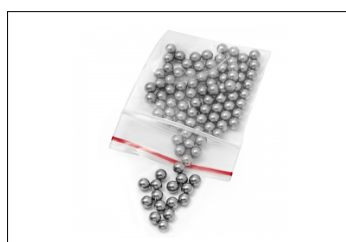
**3 inch Platform Head,
without rubber cov**



83041297 (REF #: SI-BSG07)

Genie Bead Sample Pack

5 types of beads included



83041298 (REF #: SI-BS05)

Stainless Steel Beads, 5mm

Stainless Steel 316 Beads
may be used for tough animal tissue
and resilient samples

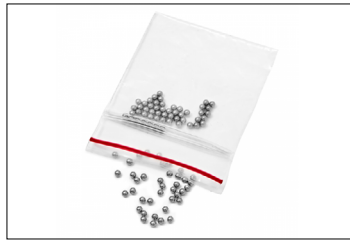


83041299 (REF #: SI-BS03)

Stainless Steel Beads, 3.2mm

Stainless Steel 316 Beads
may be used for tough animal tissue
and resilient samples

CELL DISRUPTOR GENIE™



83041300 (REF #: SI-B502)

Stainless Steel Beads, 2.4mm

Stainless Steel 316 Beads
may be used for tough animal tissue
and resilient samples



83041301 (REF #: SI-BG05)

**Disruptor Beads, 0.5mm,
375g (8 fl. oz.)**

Soda Lime Glass Beads
may be used for yeast, fungi



83041302 (REF #: SI-BG01)

**Disruptor Beads, 0.1mm,
375g (8fl. oz.)**

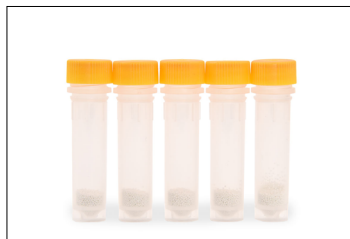
Soda Lime Glass Beads
may be used for bacteria, spores



30391402

**Lysis Tube 100x2mL
100µm ZrO2 Beads**

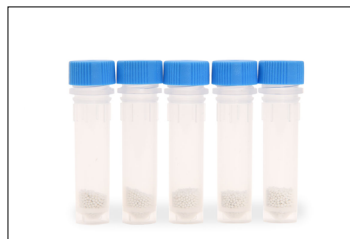
Zirconium Beads
may be used for bacteria, spores



30391404

**Lysis Tube 100x2mL
400µm ZrO2 Beads**

Zirconium Beads
may be used for yeast, algae, spores



30391405

**Lysis Tube 100x2mL
800µm ZrO2 Beads**

Zirconium Beads
may be used for fungal mycelium, cells,
spores, eukaryotic algae



30391406

**Lysis Tube 100x2mL
1.4mm ZrO2 Beads**

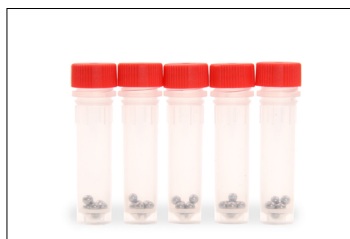
Zirconium Beads
may be used for soft tissues, cultured
cells and blood, thin sections of fungal
thallus, soft plant material



30391408

**Lysis Tube 100x2mL
3mm ZrO2 Beads**

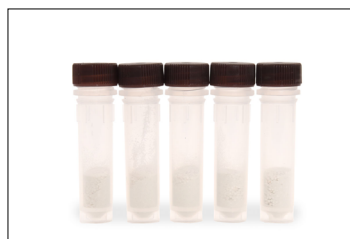
Zirconium Beads
may be used for plant, stems, roots,
leaves



30391409

**Lysis Tube 100x2mL
3mm SS. Beads**

Stainless Steel 440C Beads
may be used for tough animal tissue
and resilient samples



30391410

**Lysis Tube 100x2mL
0.1/0.8/3mm ZrO2 Bead**

Zirconium Beads
may be used for feces, soil, sediments,
biofilms



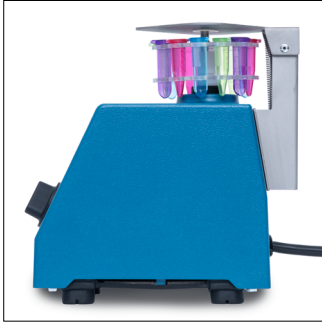
30391433

Lysis Tube 14x2mL Sample Kit

7 types of beads included

CELL DISRUPTOR GENIE™

Disruptor Close Up



Use with Accessory Attachments



with 83041243 (SI-V209)



with 83041423 (OK-0500-902)



with 83041438 (146-3011-00)

Other Features and Equipment

Zinc-casted housing with “no-walking feet” design, universal microtube holder, mounting bracket, adjustment knob with dial markings, or independent LED displays for digital models, use with 1.5mL or 2.0mL microtubes with snap or screw caps, hands-free operation, cold room and incubator compatible, speed monitor and alarm on digital model, sleep mode for energy saving on digital model.

Compliance

- **Product Safety:** IEC/EN 61010-1; IEC/EN 61010-2-051; CAN/CSA C22.2 61010-1-12; CAN/CSA C22.2 61010-2-051; UL 61010-1; UL 61010-2-051
- **Electromagnetic Compatibility:** IEC/EN 61326-1 Class A, Industrial environments; Canada ICES-003 Class A; FCC Part 15 Class A
- **Compliance Marks:** ETL; CE; RCM; WEEE



OHAUS Asia/Pacific
Headquarters
e-mail: APmarketing@ohaus.com
Tel: +86 21 64855408

With offices throughout
Europe, Asia, and
Latin America
ISO 9001:2015
Registered Quality
Management System

